

APPENDIX F

**Linear Regression for Average Absolute Humidity vs.
Average Water Level**

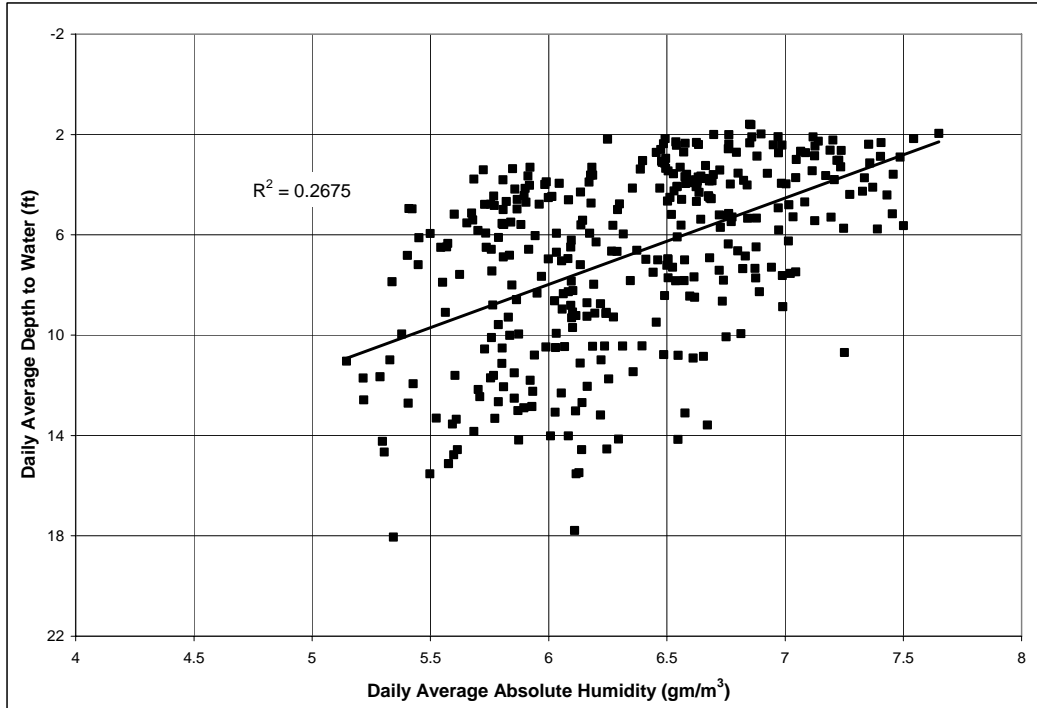


Figure F1. Linear regression of average absolute humidity vs. average piezometer water level, Blankenship Bend, 2005–2006.

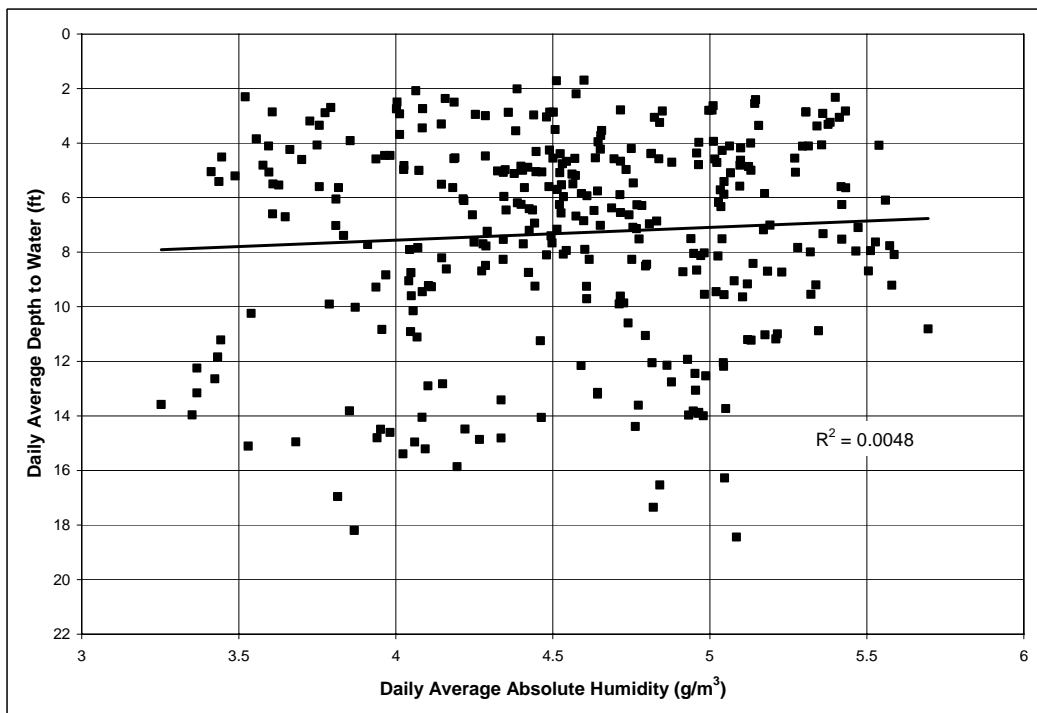


Figure F2. Linear regression of average absolute humidity vs. average piezometer water level, Havasu NE, 2005–2006.

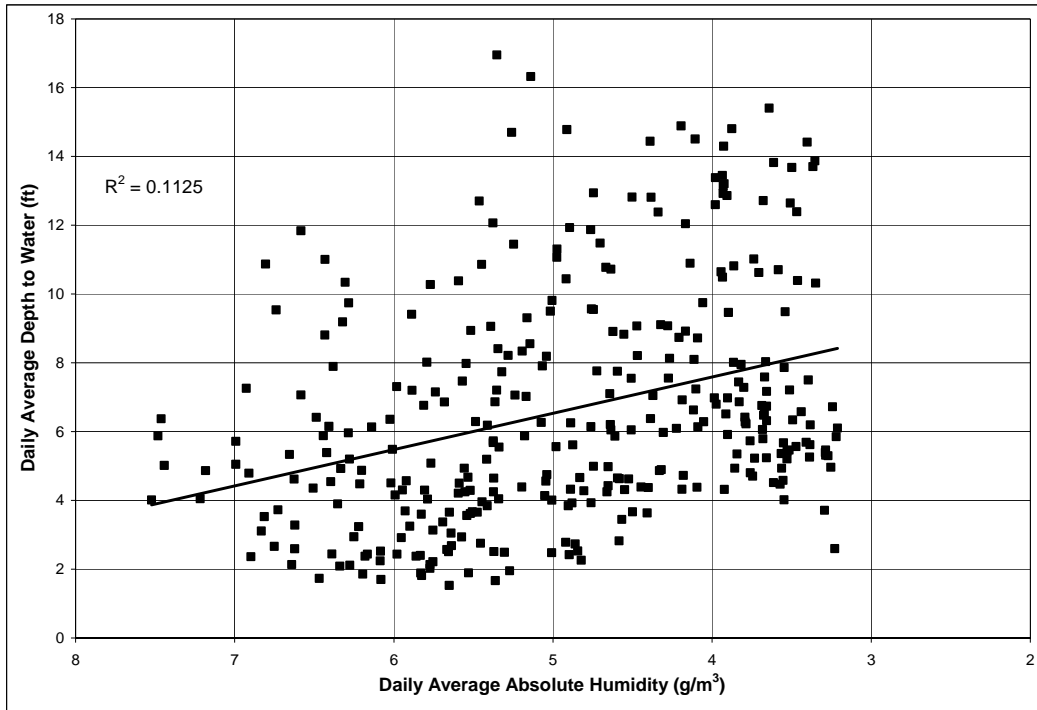


Figure F3. Linear regression of average absolute humidity vs. average piezometer water level, Ehrenberg, 2005–2006.

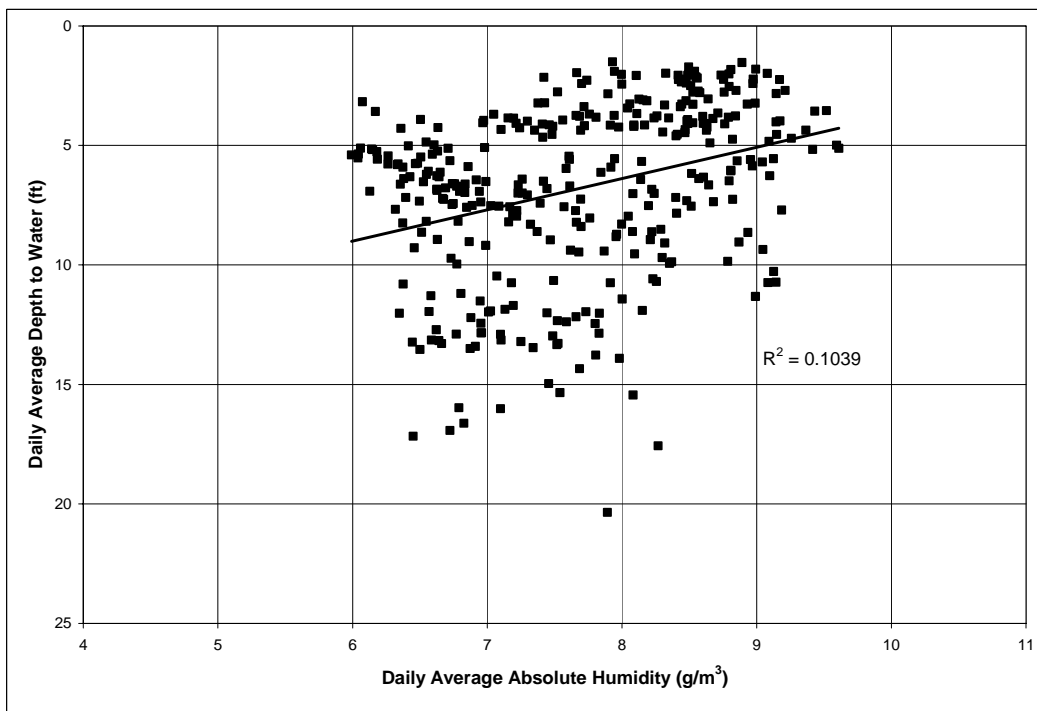


Figure F4. Linear regression of average absolute humidity vs. average piezometer water level, Three Fingers Lake, 2005–2006.

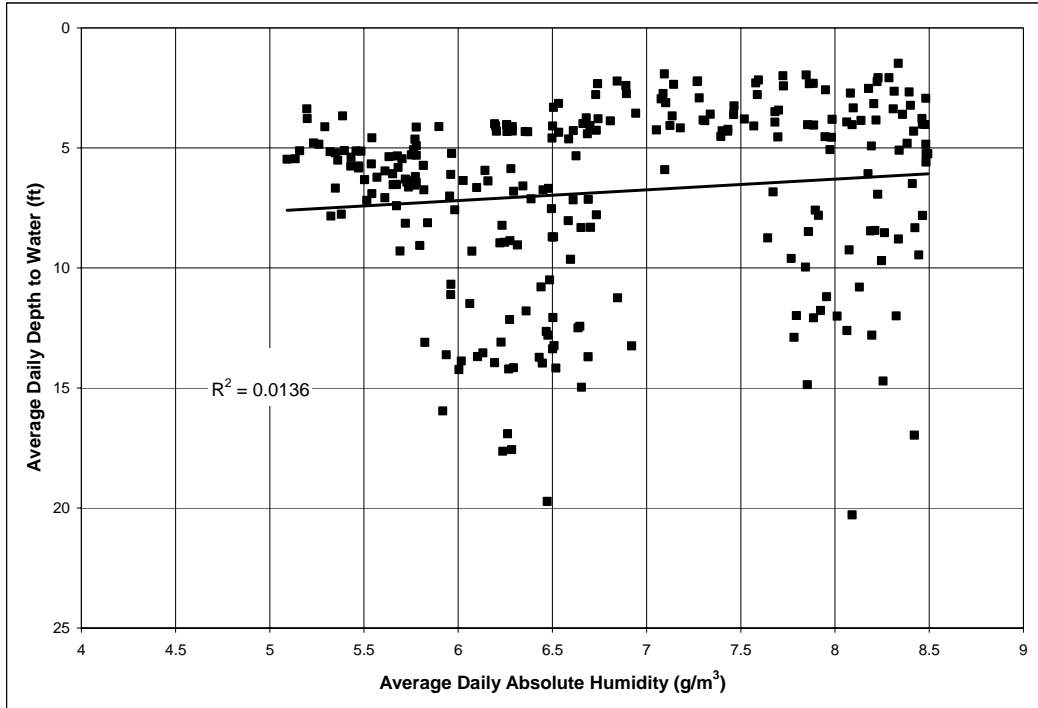


Figure F5. Linear regression of average absolute humidity vs. average piezometer water level, Cibola Lake, 2005–2006.

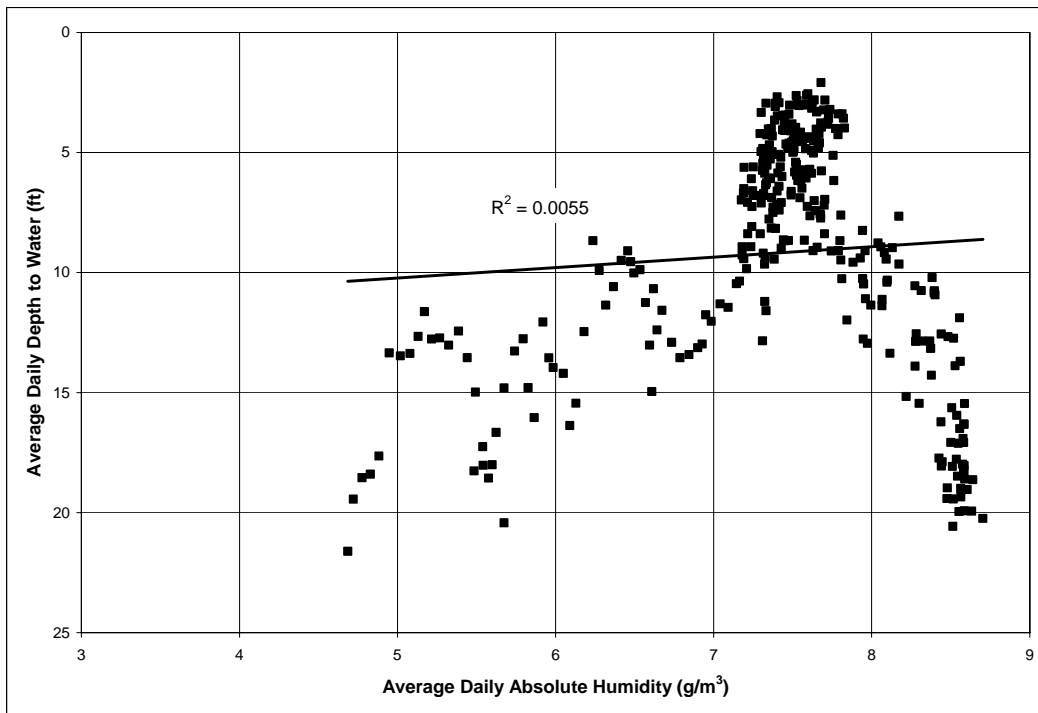


Figure F6. Linear regression of average absolute humidity vs. average piezometer water level, Walker Lake, 2005–2006.

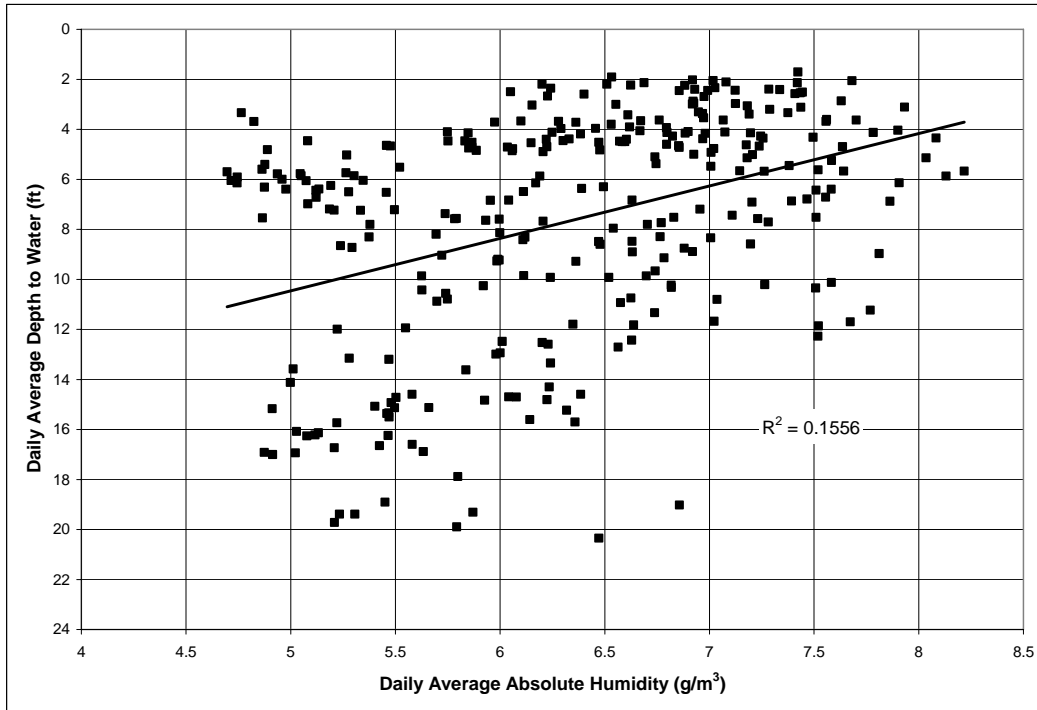


Figure F7. Linear regression of average absolute humidity vs. average piezometer water level, Paradise, 2005–2006.

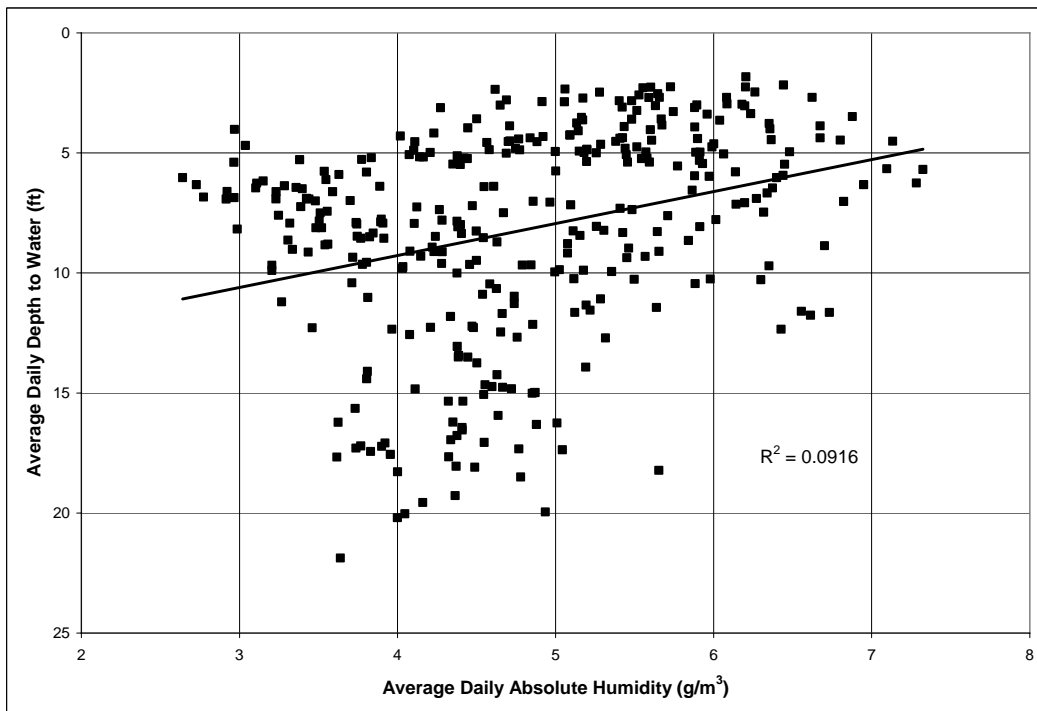


Figure F8. Linear regression of average absolute humidity vs. average piezometer water level, Hoge Ranch, 2005–2006.

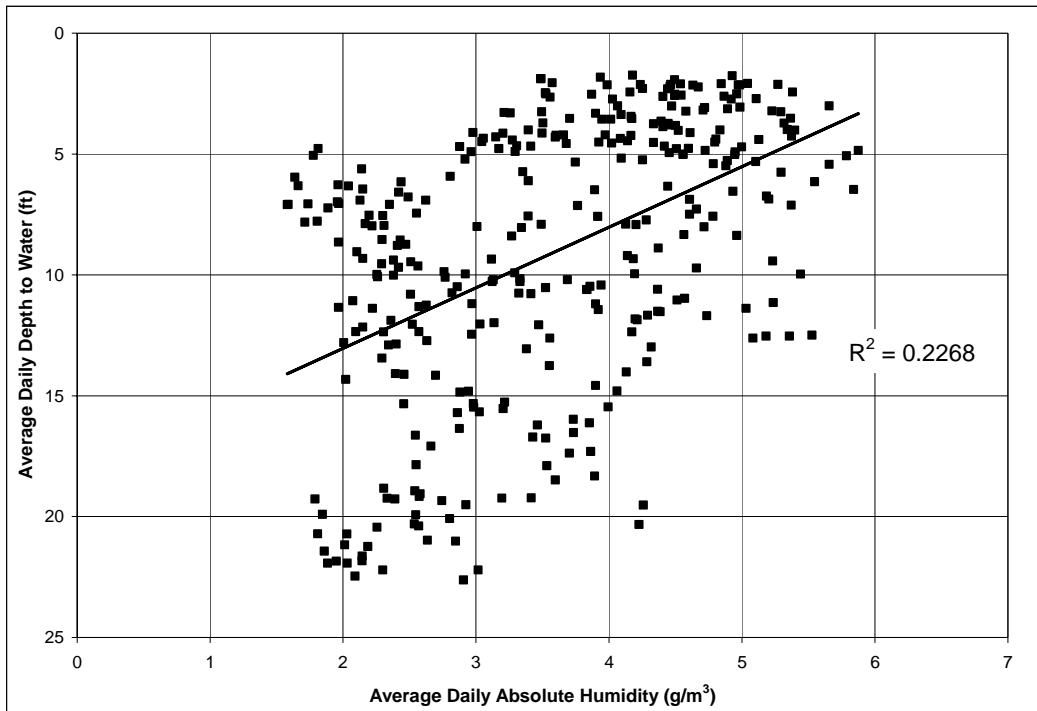


Figure F9. Linear regression of average absolute humidity vs. average piezometer water level, Rattlesnake, 2005–2006.

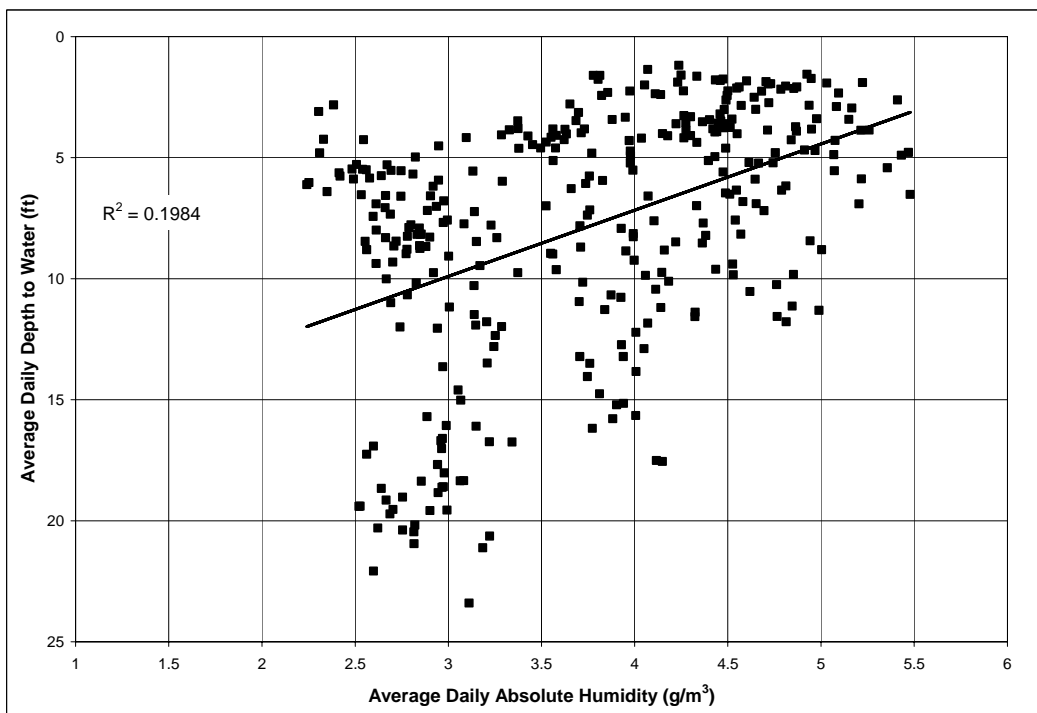


Figure F10. Linear regression of average absolute humidity vs. average piezometer water level, Clear Lake, 2005–2006.

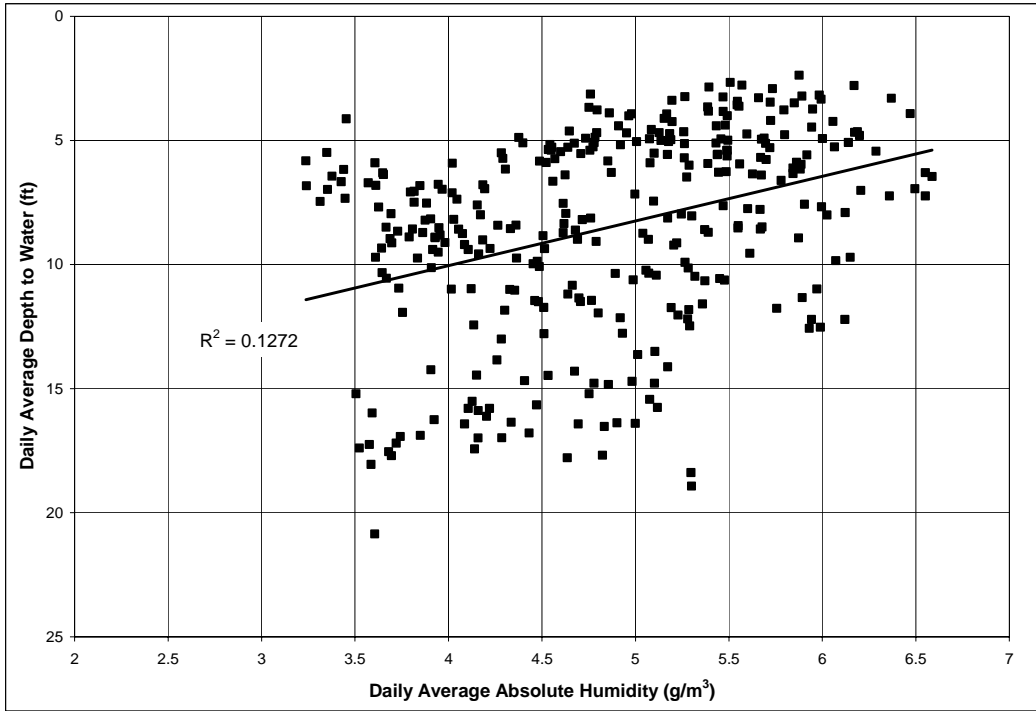


Figure F11. Linear regression of average absolute humidity vs. average piezometer water level, Ferguson Lake, 2005–2006.

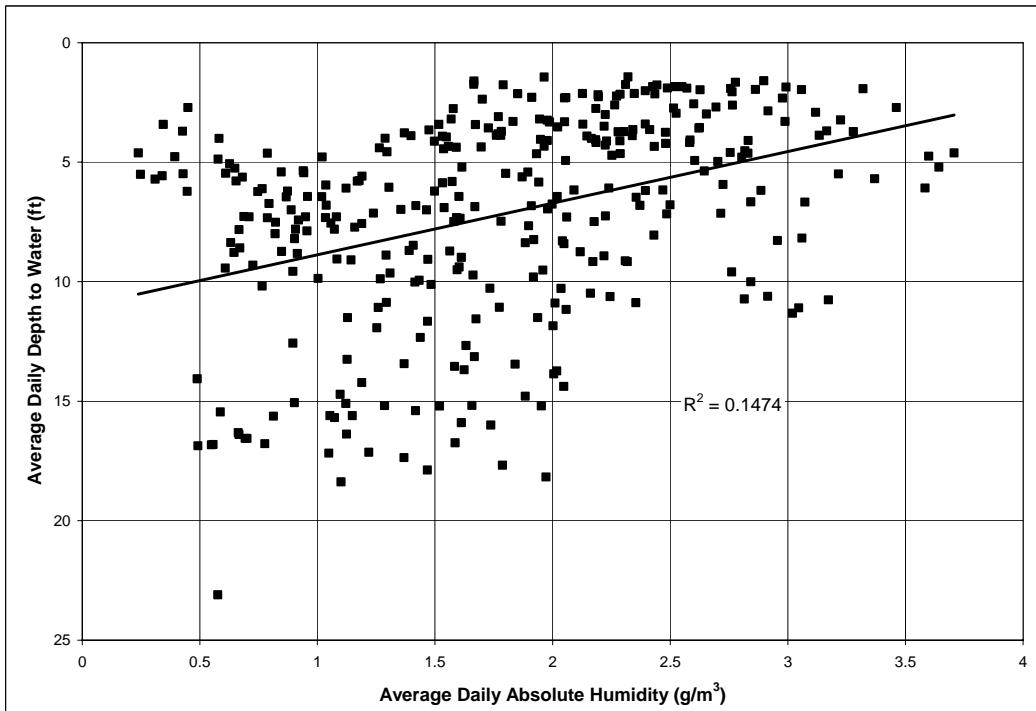


Figure F12. Linear regression of average absolute humidity vs. average piezometer water level, Ferguson Wash, 2005–2006.

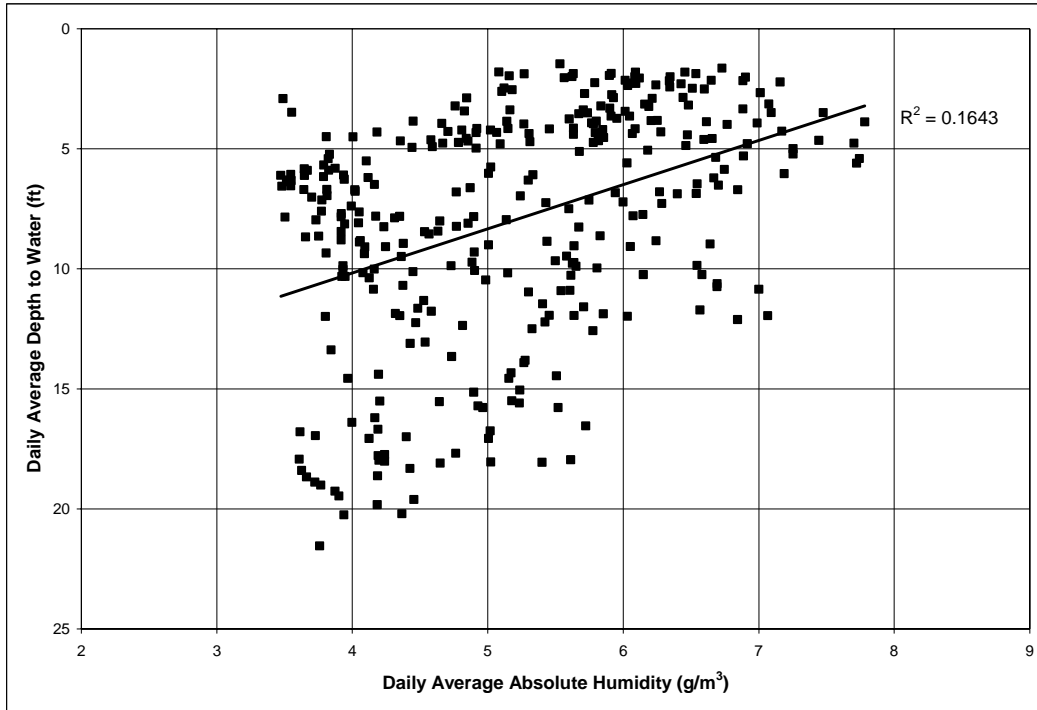


Figure F13. Linear regression of average absolute humidity vs. average piezometer water level, Great Blue Heron, 2005–2006.

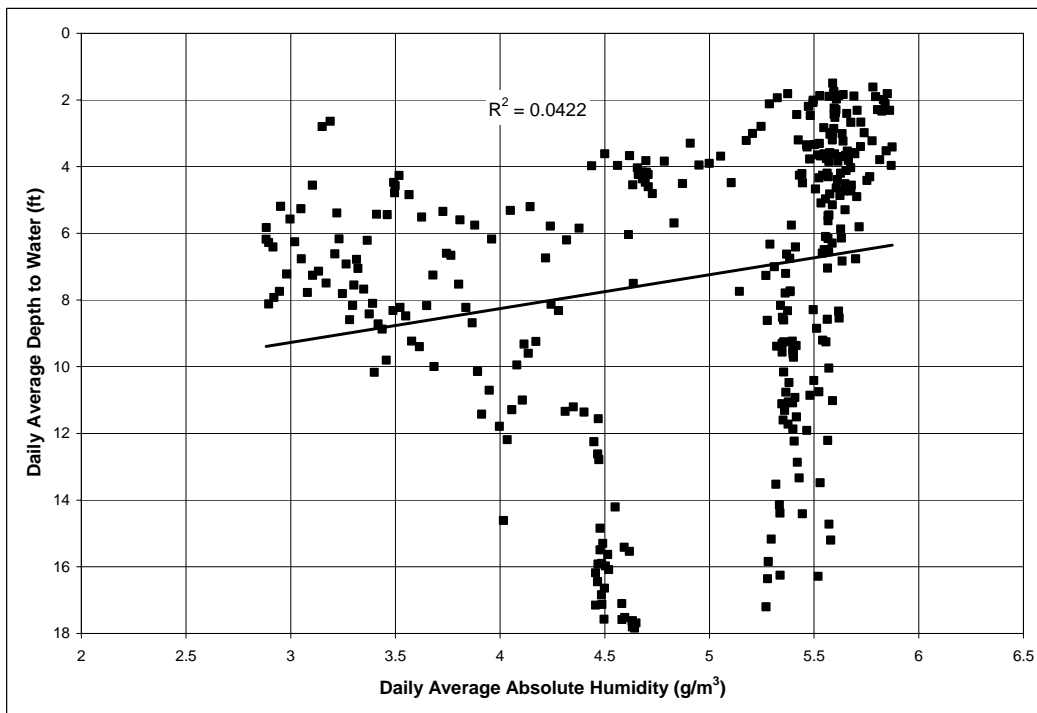


Figure F14. Linear regression of average absolute humidity vs. average piezometer water level, Mittry West, 2005–2006.

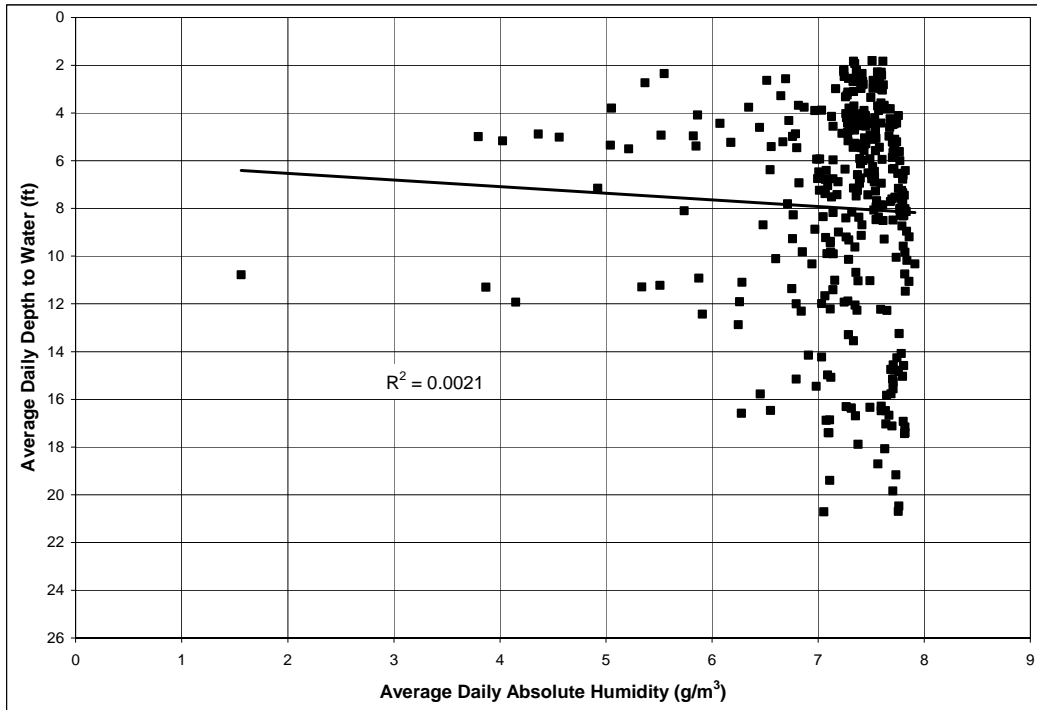


Figure F15. Linear regression of average absolute humidity vs. average piezometer water level, Gila Confluence North, 2005–2006.