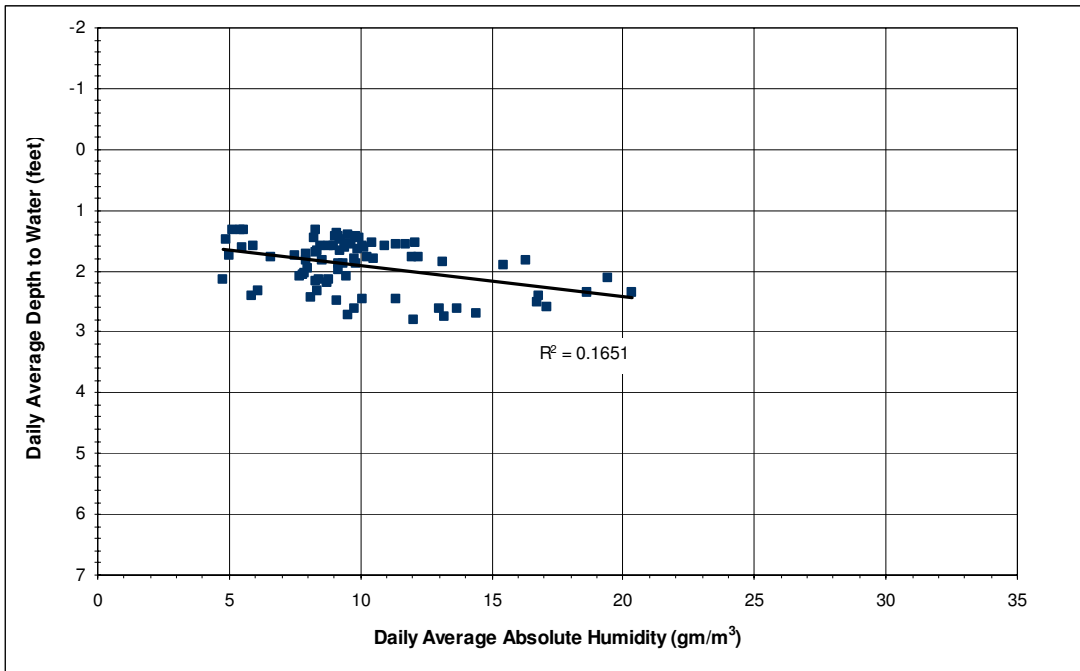
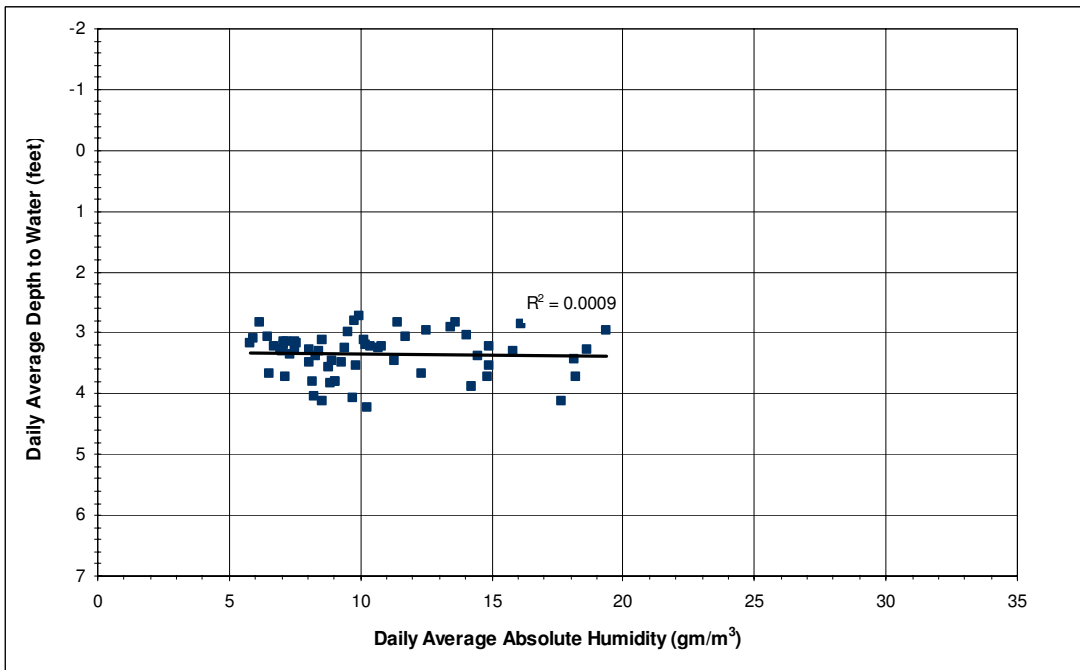


## **APPENDIX F**

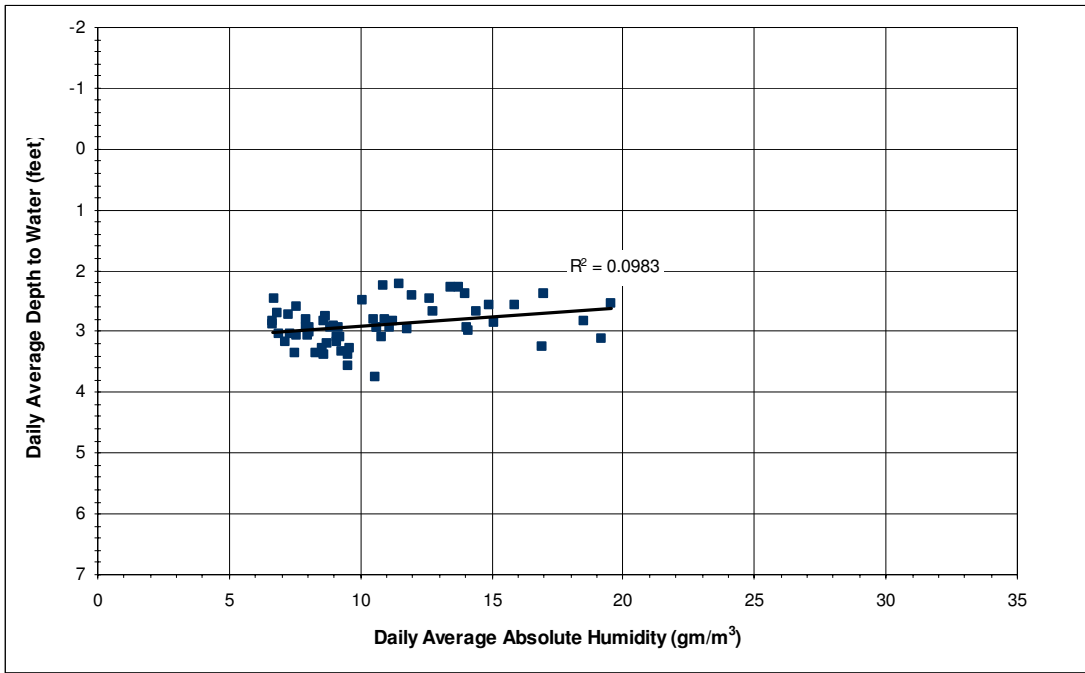
**Linear Regression for Average Absolute Humidity vs.  
Average Water Level**



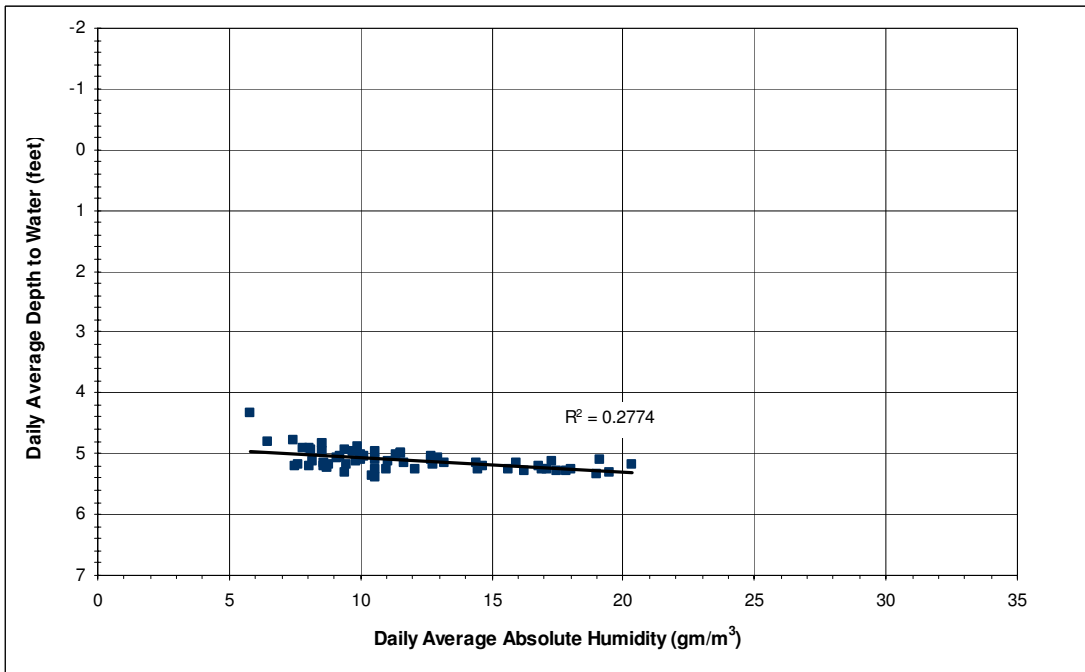
**Figure F1.** Linear regression of average absolute humidity vs. average piezometer water level, Havasu NE, 2005.



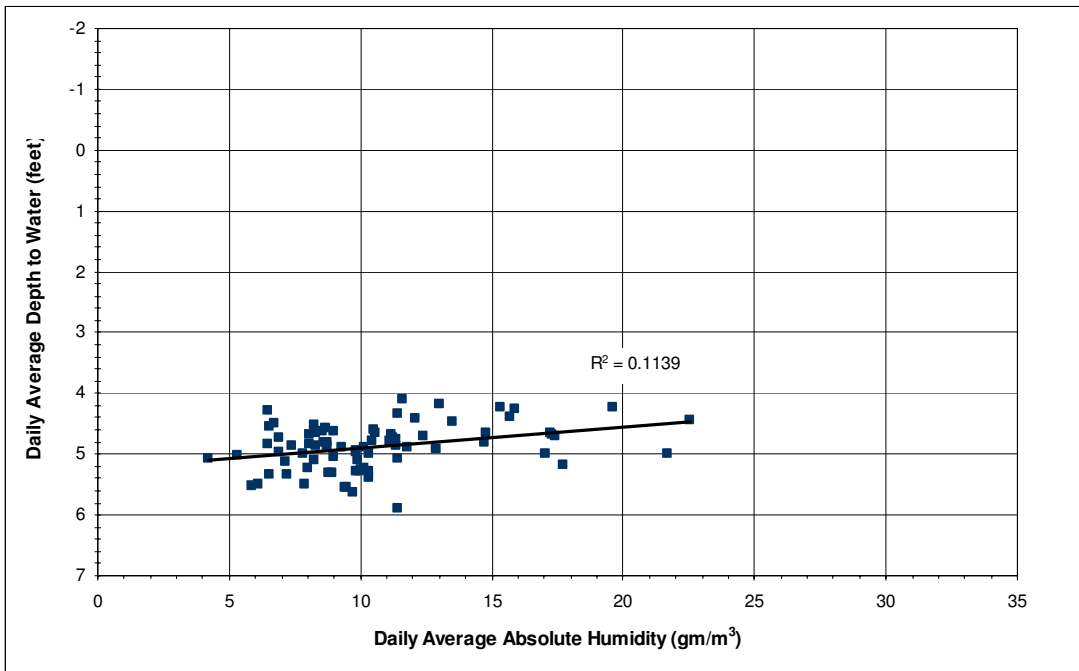
**Figure F2.** Linear regression of average absolute humidity vs. average piezometer water level, Three Fingers Lake, 2005.



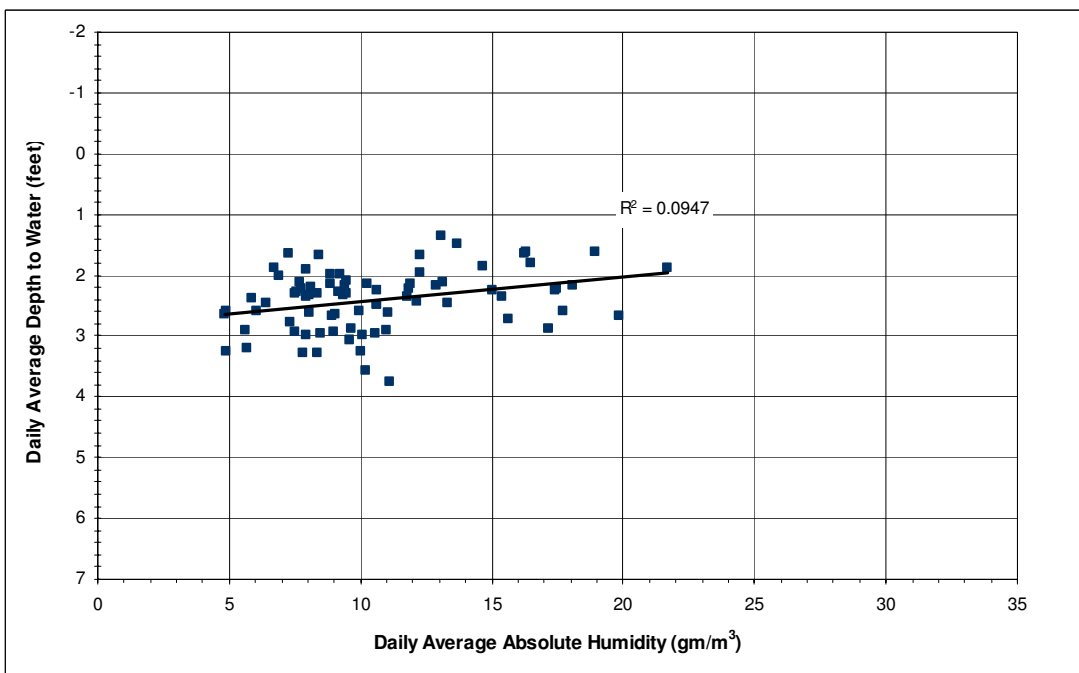
**Figure F3.** Linear regression of average absolute humidity vs. average piezometer water level, Cibola Lake, 2005.



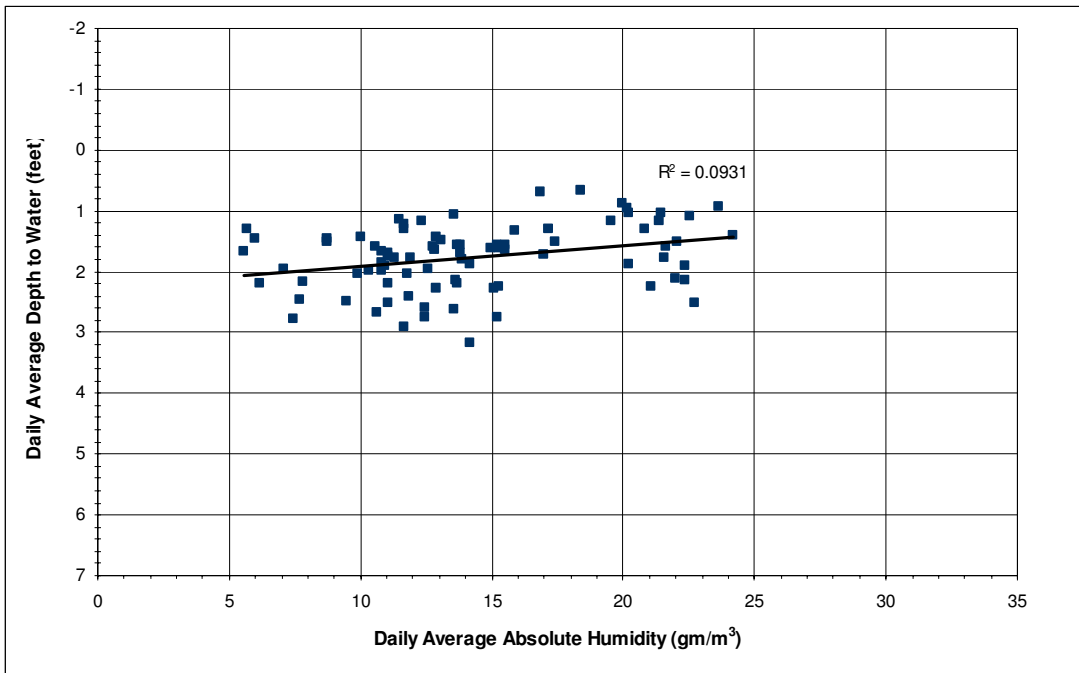
**Figure F4.** Linear regression of average absolute humidity vs. average piezometer water level, Walker Lake, 2005.



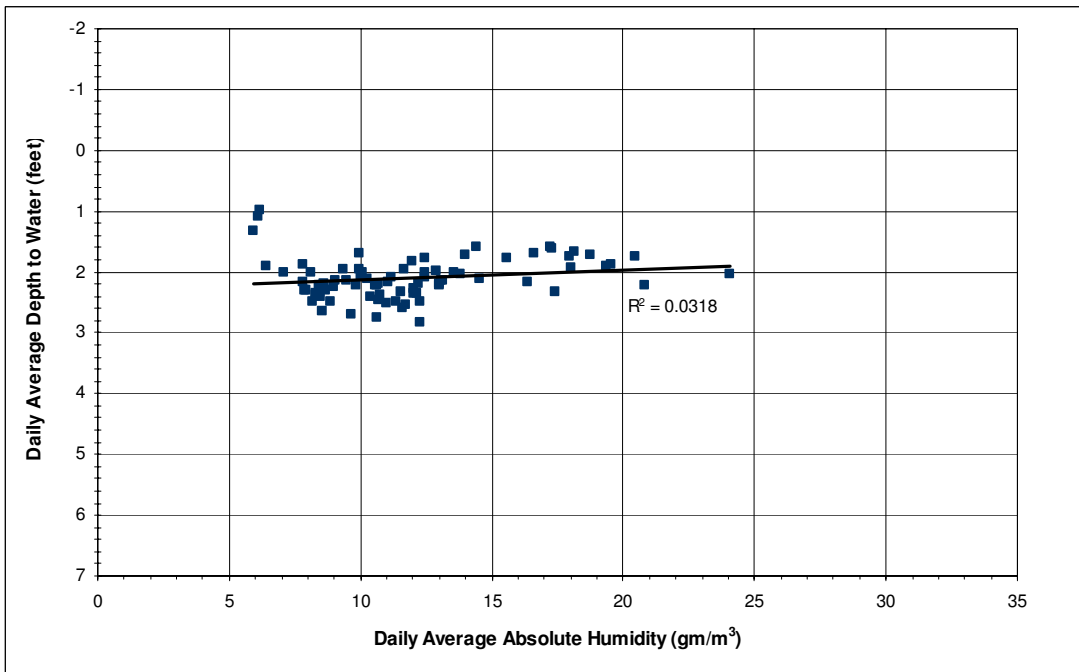
**Figure F5.** Linear regression of average absolute humidity vs. average piezometer water level, Paradise, 2005.



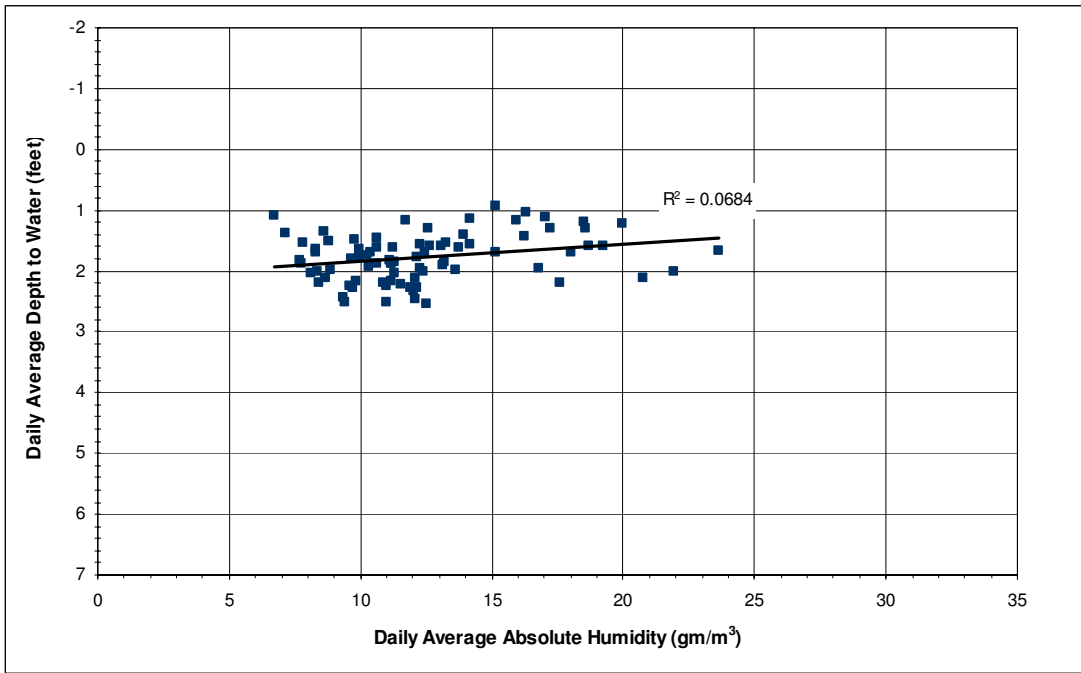
**Figure F6.** Linear regression of average absolute humidity vs. average piezometer water level, Hoge Ranch, 2005.



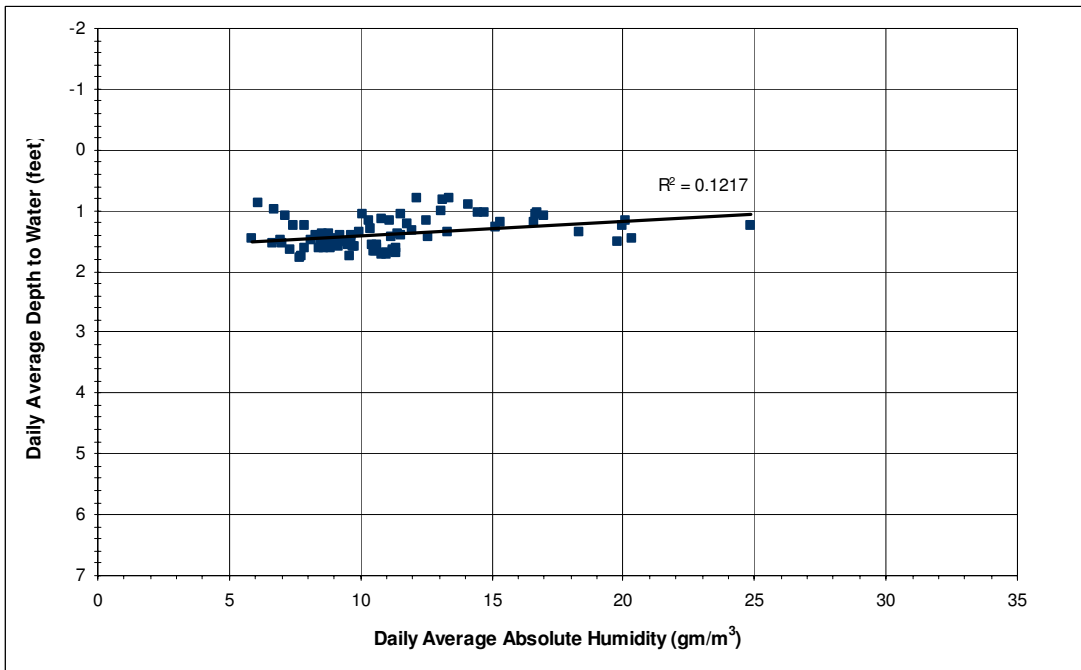
**Figure F7.** Linear regression of average absolute humidity vs. average piezometer water level, Rattlesnake, 2005.



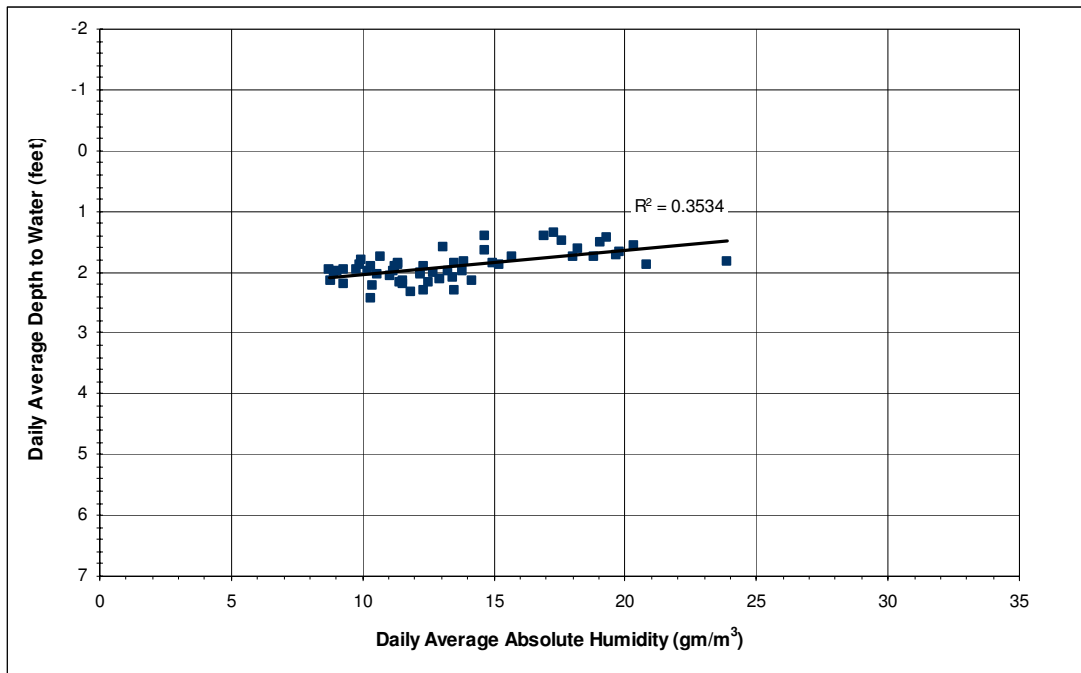
**Figure F8.** Linear regression of average absolute humidity vs. average piezometer water level, Clear Lake, 2005.



**Figure F9.** Linear regression of average absolute humidity vs. average piezometer water level, Ferguson Lake, 2005.



**Figure F10.** Linear regression of average absolute humidity vs. average piezometer water level, Ferguson Wash, 2005.



**Figure F11.** Linear regression of average absolute humidity vs. average piezometer water level, Great Blue Heron, 2005.